

# Trakfast™ 800 for Ceiling, Partitioning and General Contractors

**New**



Product from  
**SPIT**

## Features and Benefits

The TRAKFAST™ 800 offers excellent dust protection, ventilation and cooling: three essential ingredients for better tool efficiency and lifetime. The tool has a dust protected magazine, which together with the air filter offers integrated protection from dust and debris. Dust shield help cool the tool, ideal for periods of intensive use. All these features will result in less tool maintenance, keeping you working longer. Works six times faster than traditional plug screw fixings.

- Massive 100J power – Consistent fixings even in extreme applications.
- 20 pin magazine allowing the tool to fit in tight spaces.
- Optional 50 pin magazine – Reduces downtime in loading the magazine.
- Battery Gauge – Helps avoid running out of battery power.
- Fuel Cell Gauge – Always know when to change fuel cells.
- Lithium Battery – Fast Charge, Long Life
- Tool-less Depth of Drive Adjustment
- Power Saving Technology – isolates battery when tool is not in use
- Easily removable fastener guide and magazine
- Greater tool clearance – Allows the tool to fit in close to edge applications.
- Greater track clearance – Allows the tool to fit in deep track, up to 57mm.
- Removable Support Leg – Ensures tool is at 90° to work surface for optimum fixings
- Electronically controlled fuel injection – Ensures consistent power in a wide temperature range.
- Low Maintenance. Designed to work in all conditions.

## Substrates

Concrete, Composite Steel Decking, Solid Brick, Precast Concrete, Steel Pre-stressed Concrete, Hollow Block Wall, Reinforced Concrete, Reinforced Prefabricated Concrete

## Description

TrakFast™ 800 is the most technologically advanced gas tool on the market. The new TrakFast™ 800 offers a number of innovative features allowing quicker, safer installation of partitioning track, pest control mesh and formwork systems. With the 50 pin magazine and extra power, the speed at which the TrakFast™ 800 is able to perform installations provides tremendous savings in total installed cost.

## Tool Specifications

Weight	3.8kg (a) / 3.9kg (b)
Height	309mm (a) / 520mm (b)
Length	396mm
Magazine Capacity	20 (+3) pin magazine 50 (+3) pin magazine
Impact Force	100J
Actuation Pressure	5kg
Intermittent Operation	2 pins per second
Fuel Cell Life	600 pins (approx)
Battery Charge Capacity	3,000 pins (approx)
Battery Voltage	3.7V Lithium-Ion
Battery Charge time	90mins (25mins for 500 fixings)
Power Regulation	Automatic
Operating Temperature Range	-5°C to 49°C

Trakfast 800 Pulsa Gas Tool with 50 Pin Magazine



IPC energy absorber



50 nails magazine



Gas & battery gauges



Sim and streamlined design



Depth of drive no tool



Belt lock



Dust protection



New gas cell



New engineered fastener guide



Support leg

## Applications



## Product Range - TRAKFAST™ 800

Part No.	Description	Order Qty
TRAKFAST800	Trakfast 800 PULSA Gas Tool (with 20 Pin Magazine)	1

Kit includes: Trakfast™ 800 Tool, high impact carry case, 2 batteries, a battery charger, a safety glasses, allen key, dust cover and instruction manual

## C6 Pins - Standard Concrete Substrates



Raw Material  
Corrosion Protection  
Nominal Head Diameter  
Nominal Shank Diameter  
Shear Strength  
Tensile Strength  
Hardness

Carbon Steel  
Zinc Electroplated (Minimum coating 5µm)  
6.3mm  
2.6mm  
1120N/mm<sup>2</sup>  
1800N/mm<sup>2</sup>  
52-56HR<sub>C</sub> for P8C620; 50-55HR<sub>C</sub> for others

Part No	Description	Length	Collection	Order Qty
060520	P8C620 Gas Pin	20mm	Black	500
060521	P8C625 Gas Pin	25mm	Black	500
060522	P8C630 Gas Pin	30mm	Black	500
060523	P8C635 Gas Pin	35mm	Black	500
057544	P8C640 Gas Pin	40mm	Black	500

10 strip collation (suitable for use in 20 and 50 pin magazines) + 1 x Pulsa 800 Fuel Cell

# Trakfast™ 800 for Ceiling, Partitioning and General Contractors

## HC6 Pins - Hard Concrete and Steel Substrates



Raw Material	Carbon Steel
Corrosion Protection	Zinc Mechanically Plated (Min coating 10µm)
Nominal Head Diameter	6.4mm
Nominal Shank Diameter	3.0mm (Stepped shank 3.0/ 2.6mm)
Shear Strength	1200N/mm <sup>2</sup>
Tensile Strength	1950N/mm <sup>2</sup>
Hardness	53-56HR <sub>C</sub> for P8HC615; ≥56HR <sub>C</sub> for P8HC617, 22, 27, 32

Part No	Description	Length	Collection	Order Qty
060524	P8HC615 High Strength Gas Pin	15mm	Orange	500
060525	P8HC617 High Strength Gas Pin	17mm	Orange	500
060526	P8HC622 High Strength Gas Pin	22mm	Orange	500
057553	P8HC627 High Strength Gas Pin	27mm	Orange	500
057554	P8HC632 High Strength Gas Pin	32mm	Orange	500

10 strip collation (suitable for use in 20 and 50 pin magazines) + 1 x Pulsa 800 Fuel Cell

## Stainless Steel Pins for Special Applications



Raw Material	Stainless Steel Grade 304
Nominal Head Diameter	6.4mm
Nominal Shank Diameter	3.0mm (Stepped shank 3.0/ 2.6mm)
Pull-out Strength Exceeds	1kN (in concrete)

Part No	Description	Length	Collection	Order Qty
SS619TF800	Stainless Steel Pins SS619(TF800)	19mm	Black	500

10 strip collation (suitable for use in 20 and 50 pin magazines) + 1 x Pulsa 800 Fuel Cell

## Product Range - Accessories



018543



018544



011773



014641



014642



018545



018546

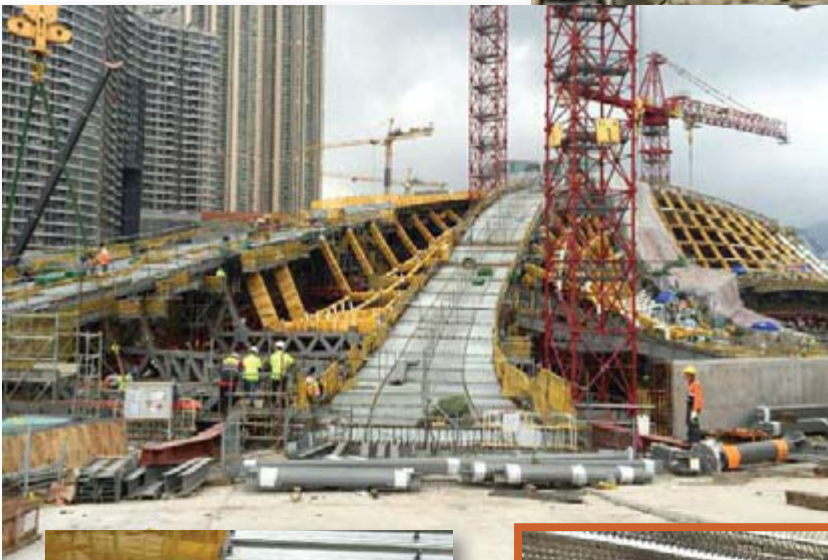


900507

Part No	Description	Order Qty
018544	50 Pin Magazine for TrakFast™ 800	1
018543	20 Pin Magazine for TrakFast™ 800	1
014641	Magnetic Washer Holder for TrakFast™ 800	1
014642	Flat Magnetic Angle/Z-clip Holder for TrakFast™ 800	1
018424	TrakFast™ 800 Fastener Guide	1
018423	CableMaster™ 800 Fastener Guide	1
013061	Cleaning Kit - Gas Tool	1
018545	Battery Lithium-Ion P800	1
018546	All-in-one charger	1
900507	In-car charger	1
011773	Pulsa 800 Fuel Cell	1



- Steel decking fixing onto beam



- Drywall track fixing onto steel



- Wall tie bracket fixing



● Cable management



● Electrical conduit saddle fixing



● Local made pipe saddle



● Wire mesh fixing onto steel column



● Wood plank fixing onto concrete

